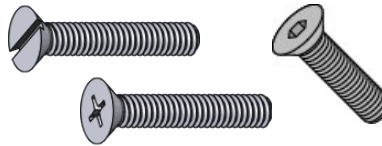


**BUTTON HEAD SCREWS**



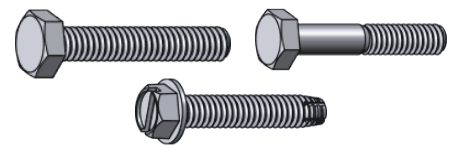
- |           |            |
|-----------|------------|
| 8-32X3/8  | 10-32X7/8  |
| 8-32X1/2  | 1/4-20X1/2 |
| 10-24X1/4 | 1/4-20X5/8 |
| 10-24X3/8 | 1/4-20X1   |
| 10-24X1/2 | 1/4-28X3/8 |
| 10-32X3/8 | 1/4-28X1/2 |
| 10-32X1/2 | 1/4-28X5/8 |
| 10-32X3/4 | M4X8       |

**FLAT HEAD SCREWS**



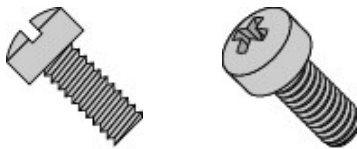
- |              |             |
|--------------|-------------|
| 4-40X1/4     | 1/4-28X1/2  |
| 4-40X1/2     | 1/4-28X9/16 |
| 6-32X1/4     | 1/4-28X3/4  |
| 6-32X3/8     | 1/4-28X1    |
| 6-32X7/16    | 5/16-18X3/4 |
| 6-32X1/2     | 5/16-18X1   |
| 8-32X1/4     | 5/16-24X1/2 |
| 8-32X5/16    | 5/16-24X3/4 |
| 8-32X3/8     | M4X6        |
| 8-32X1/2     | M4X8        |
| 8-32X5/8     | M4X10       |
| 8-32X7/8     | M4X18       |
| 10-24X1/4    | M5X8        |
| 10-24X5/16   | M5X10       |
| 10-24X3/8    | M5X12       |
| 10-24X1/2    | M5X16       |
| 10-32X3/8    | M5X20       |
| 10-32X7/16   | M5X40       |
| 10-32X1/2    | M6X12       |
| 10-32X5/8    | M6X16       |
| 10-32X3/4    | M6X30       |
| 10-32X1      | M6X50       |
| 1/4-20X1/2   | M6X22       |
| 1/4-20X1     | M8X15       |
| 1/4-20X1 1/4 | M8X20       |
| 1/4-20X2 1/2 | M8X25       |

**HEX HEAD SCREWS**



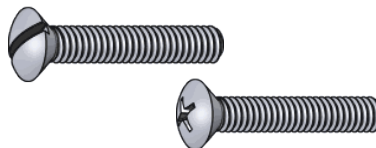
- |               |        |
|---------------|--------|
| 10-24X5/16    | M3X14  |
| 10-32X3/8     | M3X16  |
| 10-32X7/16    | M5X10  |
| 10-32X1/2     | M5X12  |
| 10-32X5/8     | M5X25  |
| 10-32X3/4     | M5X30  |
| 1/4-20X1/2    | M6X10  |
| 1/4-20X5/8    | M6X12  |
| 1/4-20X3/4    | M6X16  |
| 1/4-20X7/8    | M6X20  |
| 1/4-20X1      | M6X25  |
| 1/4-20X1 1/4  | M6X30  |
| 1/4-20X1 1/2  | M6X35  |
| 1/4-20X1 3/4  | M6X40  |
| 1/4-20X2 1/4  | M6X45  |
| 1/4-20X2 1/2  | M6X50  |
| 1/4-28X3/8    | M8X12  |
| 1/4-28X1/2    | M8X16  |
| 1/4-28X5/8    | M8X20  |
| 1/4-28X7/8    | M8X22  |
| 1/4-28X1      | M8X25  |
| 1/4-28X1 1/4  | M8X30  |
| 5/16-18X3/8   | M8X35  |
| 5/16-18X5/8   | M8X40  |
| 5/16-18X3/4   | M8X65  |
| 5/16-18X1 1/2 | M8X70  |
| 5/16-18X1 3/4 | M10X20 |
| 5/16-18X2     | M10X25 |
| 5/16-24X1/2   | M10X30 |
| 5/16-24X7/8   | M10X35 |
| 5/16-24X1 1/4 | M12X20 |
| 5/16-24X1 3/4 | M12X25 |
| 3/8-16X2      | M12X35 |

**FILLISTER HEAD SCREW**



- |             |              |
|-------------|--------------|
| 4-40X1/4    | 10-32X1/4    |
| 4-40X9/16   | 10-32X5/16   |
| 5-44X5/16   | 10-32X3/8    |
| 6-32X3/16   | 10-32X7/16   |
| 6-32X1/4    | 10-32X1/2    |
| 6-32X5/16   | 10-32X5/8    |
| 6-32X3/8    | 10-32X3/4    |
| 6-40X1/4    | 10-32X7/8    |
| 8-32X1/4    | 10-32X1      |
| 8-32X5/16   | 10-32X1 1/8  |
| 8-32X3/8    | 10-32X1 1/4  |
| 8-32X7/16   | 10-32X1 1/2  |
| 8-32X1/2    | 10-32X2 1/4  |
| 8-32X5/8    | 1/4-20X1/2   |
| 10-24X5/16  | 1/4-20X5/8   |
| 10-24X3/8   | 1/4-28X7/16  |
| 10-24X1/2   | 1/4-28X1/2   |
| 10-24X1 1/4 | 1/4-28X1 1/8 |

**OVAL HEAD SCREWS**



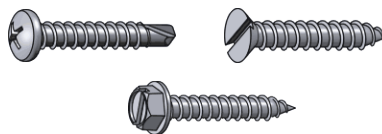
- |              |       |
|--------------|-------|
| 6-32X3/8     | M5X16 |
| 8-32X7/16    | M5X20 |
| 10-32X1/2    | M6X30 |
| 10-32X5/8    | M6X40 |
| 10-32X1 3/16 | M6X50 |
| M4X10        |       |

**CARRIAGE BOLTS**



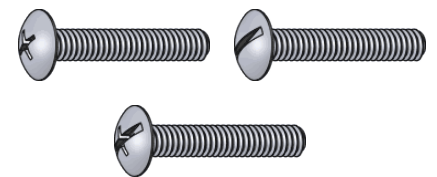
- |           |            |
|-----------|------------|
| 8-32X3/8  | 10-32X7/8  |
| 8-32X1/2  | 1/4-20X1/2 |
| 10-24X1/4 | 1/4-20X5/8 |
| 10-24X3/8 | 1/4-20X1   |
| 10-24X1/2 | 1/4-28X3/8 |
| 10-32X3/8 | 1/4-28X1/2 |
| 10-32X1/2 | 1/4-28X5/8 |
| 10-32X3/4 | M4X8       |

**SHEET METAL SCREWS**



- |        |         |
|--------|---------|
| #7X1/2 | #8X5/8  |
| #7X5/8 | #10X1/2 |
| #8X1/2 | #12X3/4 |
| #8X3/8 |         |

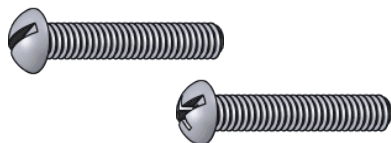
**TRUSS HEAD SCREWS**



- |            |            |
|------------|------------|
| 6-32X5/16  | 10-32X1/4  |
| 8-32X3/16  | 10-32X1/2  |
| 8-32X1/4   | 10-32X5/8  |
| 8-32X3/8   | 1/4-20X3/8 |
| 10-24X3/4  | M4X10      |
| 10-32X3/16 |            |

**THIS IS ONLY A SAMPLE OF ITEMS AVAILABLE.  
PLEASE CALL, FAX OR EMAIL FOR ITEMS AND SIZES NOT LISTED.**

**ROUND HEAD SCREWS**



- |            |             |
|------------|-------------|
| 4-40X1/8   | 8-32X7/16   |
| 4-40X3/16  | 8-32X5/8    |
| 4-40X1/4   | 10-24X1/4   |
| 4-40X5/16  | 10-24X5/16  |
| 4-40X1/2   | 10-24X3/8   |
| 4-40X5/8   | 10-24X1/2   |
| 4-40X7/8   | 10-24X5/8   |
| 6-32X3/16  | 10-24X1 3/4 |
| 6-32X1/4   | 10-32X1/4   |
| 6-32X5/16  | 10-32X5/16  |
| 6-32X7/16  | 10-32X3/8   |
| 6-32X7/8   | 10-32X5/8   |
| 6-32X1     | 10-32X3/4   |
| 6-32X1 1/4 | 10-32X7/8   |
| 6-32X1 3/4 | 10-32X1     |
| 6-32X2     | 10-32X1 1/4 |
| 8-32X1/8   | 1/4-20X1/4  |
| 8-32X3/16  | 1/4-20X1/2  |
| 8-32X1/4   | 1/4-20X3/4  |
| 8-32X5/16  | 1/4-28X1/2  |
| 8-32X3/8   |             |

**SOCKET CAP SCREWS**



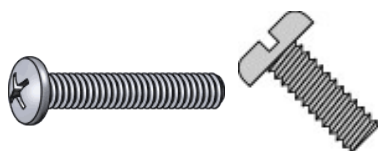
- |              |               |
|--------------|---------------|
| 4-40X3/8     | 5/16-18X5/8   |
| 6-32X1/4     | 5/16-18X7/8   |
| 6-32X3/8     | 5/16-18X1     |
| 6-32X5/8     | 5/16-24X1/2   |
| 6-32X3/4     | 5/16-24X1 1/4 |
| 6-32X1       | 3/8-16X3/4    |
| 8-32X1/4     | 3/8-16X1 1/4  |
| 8-32X3/8     | M3X6          |
| 8-32X1/2     | M3X10         |
| 8-32X5/8     | M4X10         |
| 8-32X3/4     | M4X12         |
| 8-32X7/8     | M4X15         |
| 8-32X1       | M4X20         |
| 8-32X1 1/4   | M4X20         |
| 10-24X3/8    | M5X6          |
| 10-24X1/2    | M5X8          |
| 10-24X5/8    | M5X10         |
| 10-24X3/4    | M5X15         |
| 10-24X7/8    | M5X16         |
| 10-24X1      | M5X18         |
| 10-24X1 1/2  | M5X20         |
| 10-32X5/16   | M5X25         |
| 10-32X3/8    | M5X30         |
| 10-32X1/2    | M5X35         |
| 10-32X5/8    | M5X40         |
| 10-32X3/4    | M6X8          |
| 10-32X7/8    | M6X10         |
| 10-32X1      | M6X12         |
| 10-32X1 1/4  | M6X16         |
| 10-32X2      | M6X18         |
| 1/4-20X1/2   | M6X20         |
| 1/4-20X5/8   | M6X25         |
| 1/4-20X3/4   | M6X30         |
| 1/4-20X7/8   | M6X35         |
| 1/4-20X1     | M6X40         |
| 1/4-20X1 1/4 | M6X45         |
| 1/4-20X1 1/2 | M6X55         |
| 1/4-20X1 3/4 | M6X85         |
| 1/4-20X2     | M8X12         |
| 1/4-28X3/8   | M8X16         |
| 1/4-28X1/2   | M8X20         |
| 1/4-28X5/8   | M8X25         |
| 1/4-28X3/4   | M8X35         |
| 1/4-28X7/8   | M8X41         |
| 1/4-28X1     | M8X45         |
| 1/4-28X1 1/2 | M10X20        |
| 5/16-18X3/8  | M10X30        |

**CUP POINT SET SCREWS**



- |              |               |
|--------------|---------------|
| 6-32X1/8     | 1/4-28X5/8    |
| 6-32X3/16    | 1/4-28X1      |
| 6-32X1/4     | 1/4-28X1 1/2  |
| 8-32X1/8     | 5/16-18X5/16  |
| 8-32X3/16    | 5/16-18X3/8   |
| 8-32X1/4     | 5/16-18X3/4   |
| 8-32X3/8     | 5/16-24X5/16  |
| 8-32X1/2     | 5/16-24X1 1/4 |
| 10-24X3/16   | 3/8-16X1/4    |
| 10-24X1/4    | 3/8-24X1/2    |
| 10-24X3/8    | 3/8-24X1 1/4  |
| 10-24X1/2    | M4X4          |
| 10-24X3/4    | M4X6          |
| 10-32X1/8    | M4X8          |
| 10-32X1/4    | M5X5          |
| 10-32X5/16   | M5X6          |
| 10-32X3/8    | M5X8          |
| 10-32X7/16   | M5X10         |
| 10-32X5/8    | M6X5          |
| 1/4-20X3/16  | M6X6          |
| 1/4-20X1/4   | M6X8          |
| 1/4-20X5/16  | M6X10         |
| 1/4-20X3/8   | M6X12         |
| 1/4-20X1/2   | M6X16         |
| 1/4-20X3/4   | M6X20         |
| 1/4-20X1 1/2 | M8X20         |
| 1/4-28X1/4   | M8X25         |
| 1/4-28X5/16  | M8X45         |
| 1/4-28X7/16  | M10X15        |

**PAN HEAD SCREWS**



- |             |            |
|-------------|------------|
| 4-40X3/16   | 1/4-28X3/4 |
| 4-40X5/16   | M2X5       |
| 4-40X1/2    | M2X12      |
| 6-32X1/8    | M3X5       |
| 6-32X3/16   | M3X6       |
| 6-32X1/4    | M3X8       |
| 6-32X3/8    | M3X10      |
| 6-32X7/16   | M3X14      |
| 6-32X7/8    | M3X16      |
| 8-32X1/4    | M3X20      |
| 8-32X5/16   | M3X25      |
| 8-32X3/8    | M4X4       |
| 8-32X1/2    | M4X5       |
| 10-24X3/4   | M4X6       |
| 10-24X1 3/4 | M4X8       |
| 10-32X3/16  | M4X10      |
| 10-32X1/4   | M4X16      |
| 10-32X3/8   | M4X20      |
| 10-32X1/2   | M4X25      |
| 10-32X5/8   | M5X5       |
| 10-32X3/4   | M5X10      |
| 10-32X7/8   | M5X16      |
| 10-32X1     | M5X20      |
| 1/4-20X1/2  | M6X14      |
| 1/4-28X1/2  | M6X16      |
| 1/4-28X5/8  |            |

**HALF DOG POINT SET SCREWS**



- |              |              |
|--------------|--------------|
| <b>STEEL</b> | <b>BRASS</b> |
| 8-32X1/4     | 1/4-20X3/8   |
| 1/4-20X5/16  | 1/4-20X1/2   |
| 1/4-20X1/2   | 5/16-18X5/16 |
| 1/4-28X2     | 5/16-18X3/8  |

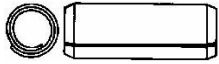
**CONE POINT SET SCREWS**



- |            |             |
|------------|-------------|
| 10-32X3/8  | 1/4-28X5/8  |
| 1/4-28X3/8 | 1/4-20X5/16 |

**THIS IS ONLY A SAMPLE OF ITEMS AVAILABLE.**  
**PLEASE CALL, FAX OR EMAIL FOR ITEMS AND SIZES NOT LISTED.**

**COILED ROLL PINS**



1/16X1/2	5/32X7/8
3/32X3/4	5/32X1 1/4
1/8X3/4	5/32X2
1/8X7/8	3/16X3/4
1/8X1	3/16X7/8
1/8X1 1/8	3/16X1
1/8X1 1/4	3/16X1 1/2
5/32X5/8	1/4X1 1/4

**SPLIT ROLL PINS**



1/16X3/8	5/32X1
1/16X1/2	5/32X1 1/4
3/32X1/2	3/16X5/8
3/32X3/4	3/16X3/4
3/32X7/8	3/16X7/8
1/8X1/2	3/16X15/16
1/8X5/8	3/16X1
1/8X11/16	3/16X1 1/8
1/8X3/4	3/16X1 1/4
1/8X3/16	3/16X1 1/2
1/8X7/8	1/4X5/8
1/8X1	1/4X3/4
1/8X1 1/4	1/4X15/16
5/32X1/2	1/4X1
5/32X5/8	1/4X1 1/4
5/32X11/16	1/4X1 3/8
5/32X3/4	1/4X1 1/2
5/32X7/8	1/4X2

**TAPER PINS**



6/0X1/2	0X3/4
6/0X3/8	0X1
6/0X3/4	0X1 1/16
6/0X1	0X1 1/2
5/0X1/2	1X3/4
5/0X1 1/4	1X7/8
4/0X5/8	1X1
4/0X3/4	1X1 1/8
4/0X7/8	1X1 1/4
4/0X1 1/4	2X1
3/0X1/2	2X1 1/8
3/0X5/8	2X1 1/4
3/0X3/4	2X1 1/2
3/0X7/8	2X2
3/0X1	3X1
2/0X3/4	3X1 1/4
2/0X1	3X1 3/4
2/0X1 1/4	6X2 1/8

**COTTER PINS**



1/16X3/4	M2X25
1/16X1	M1.6X10
M1X6	

**CRESCENT RINGS**



1/4	1/2
9/32	9/16
5/16	3/4
3/8	1 1/8
7/16	

**E RINGS**



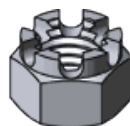
3/32	5/16
1/8	3/8
5/32	7/16
3/16	5/8
7/32	3/4
1/4	7/8

**EXTERNAL RETAINING RINGS**



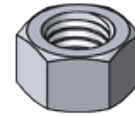
1/4	25/32
5/16	13/16
11/32	7/8
7/16	1
1/2	1 1/8
5/8	1 3/16
3/4	

**CASTLE NUTS**



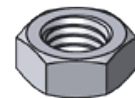
1/4-28	5/16-18
--------	---------

**HEX NUTS**



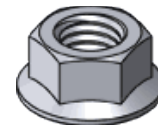
4-40	1/4-20
6-32	1/4-28
8-32	5/16-18
8-40	3/8-16
10-24	3/8-24
10-32	7/16-24
12-24	1/2-13

**JAM NUTS**



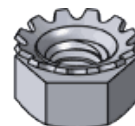
1/4-20	5/16-24
1/4-28	3/8-24
5/16-18	1/2-20

**FLANGE NUTS**



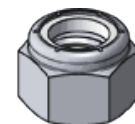
10-32	1/4-20
-------	--------

**KEPS NUTS**



4-40	8-32
6-32	10-32

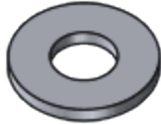
**NYLON INSERT LOCK NUTS**



6-32	1/4-28
10-32	3/8-24

**THIS IS ONLY A SAMPLE OF ITEMS AVAILABLE.  
PLEASE CALL, FAX OR EMAIL FOR ITEMS AND SIZES NOT LISTED.**

**FLAT WASHERS**



- |          |          |
|----------|----------|
| #4 SAE   | 5/16 USS |
| #5 SAE   | 3/8 SAE  |
| #6 SAE   | 3/8 SAE  |
| #8 SAE   | ,M3      |
| #10 SAE  | M4       |
| #10 USS  | M5       |
| #12 SAE  | M6       |
| 1/4 SAE  | M8       |
| 1/4 USS  | M10      |
| 5/16 SAE |          |

**SPLIT LOCK WASHERS**



- |     |      |
|-----|------|
| #6  | #12  |
| #8  | 1/4  |
| #10 | 5/16 |

**EXTERNAL TOOTH WASHERS**



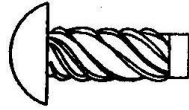
- |     |      |
|-----|------|
| #6  | 5/16 |
| #8  | 3/8  |
| #10 | 1/2  |
| 1/4 |      |

**INTERNAL TOOTH WASHERS**



- |    |     |
|----|-----|
| #6 | 1/4 |
|----|-----|

**DRIVE SCREWS**



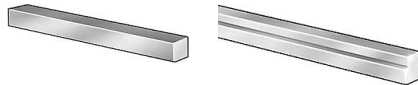
- |         |        |
|---------|--------|
| #00X1/4 | #6X1/4 |
| #0X3/16 |        |

**SHOULDER BOLTS**



- |                |                   |
|----------------|-------------------|
| 1/4X10-24X5/16 | 5/16X1/4-20X1 1/2 |
| 1/4X10-24X3/4  | 1/2X3/8-16X1/2    |
| 1/4X10-24X5/8  | 1/2X3/8-16X3/4    |

**KEY STOCK**



- |                    |                  |
|--------------------|------------------|
| <b>RECTANGULAR</b> | <b>SQUARE</b>    |
| 1/4X5/16           | 1/8X1/8 SQUARE   |
|                    | 3/16X3/16 SQUARE |
| <b>STEP KEY</b>    | 1/4X1/4 SQUARE   |
| 3/16X1/4           | 5/16X5/16 SQUARE |

**THUMB SCREWS**



- |              |             |
|--------------|-------------|
| 10-24X1      | 5/16-18X1/2 |
| 10-32X1/2    | M5X10       |
| 10-32X3/4    | M5X25       |
| 1/4-20X1 1/2 | M6X16       |
| 1/4-28X7/8   | M6X20       |

**GENERIC THUMBSCREWS ARE AVAILABLE IN BOTH METRIC AND SAE. THESE WILL REPLACE THOUSANDS OF THUMBSCREWS USED ON MAILING EQUIPMENT, FOLDERS, PRESS'S, COLLATORS, BOOKLET MAKERS, ETC. THESE THUMBSCREWS HAVE A PLASTIC KNOB WITH A STEEL SHANK.**

**BUSHINGS**



- |                |                   |
|----------------|-------------------|
| 3/16X5/16X5/16 | 1/2X5/8X1/2       |
| 3/16X3/8X1/4   | 1/2X5/8X5/8       |
| 1/4X3/8X1/4    | 1/2X5/8X3/4       |
| 1/4X3/8X5/16   | 1/2X5/8X7/8       |
| 1/4X3/8X1/2    | 1/2X5/8X1         |
| 1/4X3/8X5/8    | 1/2X5/8X1 1/4     |
| 5/16X3/8X3/8   | 1/2X5/8X1 5/16    |
| 5/16X3/8X1/2   | 1/2X11/16X3/8     |
| 5/16X7/16X5/16 | 1/2X11/16X1/2     |
| 5/16X7/16X3/8  | 1/2X11/16X5/8     |
| 5/16X7/16X1/4  | 1/2X11/16X3/4     |
| 5/16X7/16X5/8  | 1/2X11/16X1       |
| 5/16X7/16X3/4  | 1/2X11/16X1 15/16 |
| 3/8X1/2X5/16   | 1/2X3/4X1/2       |
| 3/8X1/2X7/16   | 1/2X3/4X5/8       |
| 3/8X1/2X1/2    | 1/2X3/4X3/4       |
| 3/8X1/2X5/8    | 1/2X3/4X1         |
| 3/8X1/2X3/4    | 1/2X3/4X1 1/4     |
| 3/8X1/2X7/8    | 5/8X3/4X1/2       |
| 3/8X1/2X15/16  | 5/8X3/4X3/8       |
| 3/8X1/2X1      | 5/8X3/4X5/8       |
| 3/8X1/2X1/2    | 5/8X3/4X3/4       |
| 3/8X5/8X1/2    | 5/8X3/4X7/8       |
| 7/16X9/16X3/8  | 5/8X3/4X1 1/4     |
| 1/2X5/8X3/8    | 5/8X3/4X1         |

**U-TYPE SPEED NUT**



8X.025-.040

**THIS IS ONLY A SAMPLE OF ITEMS AVAILABLE. PLEASE CALL, FAX OR EMAIL FOR ITEMS AND SIZES NOT LISTED.**